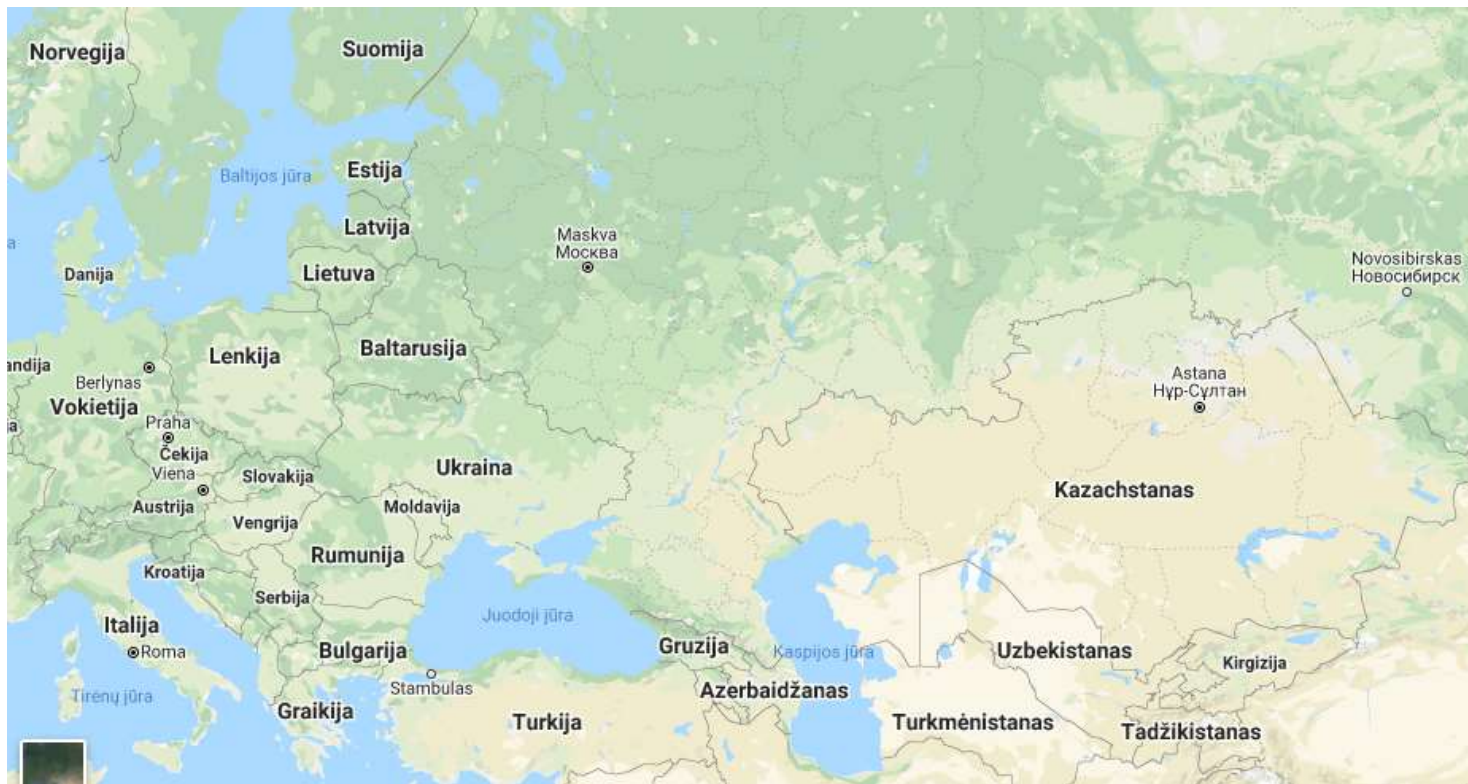




AKMENĖ DISTRICT MUNICIPALITY



AKMENĖ DISTRICT MUNICIPALITY (1)



Territory 844 km²



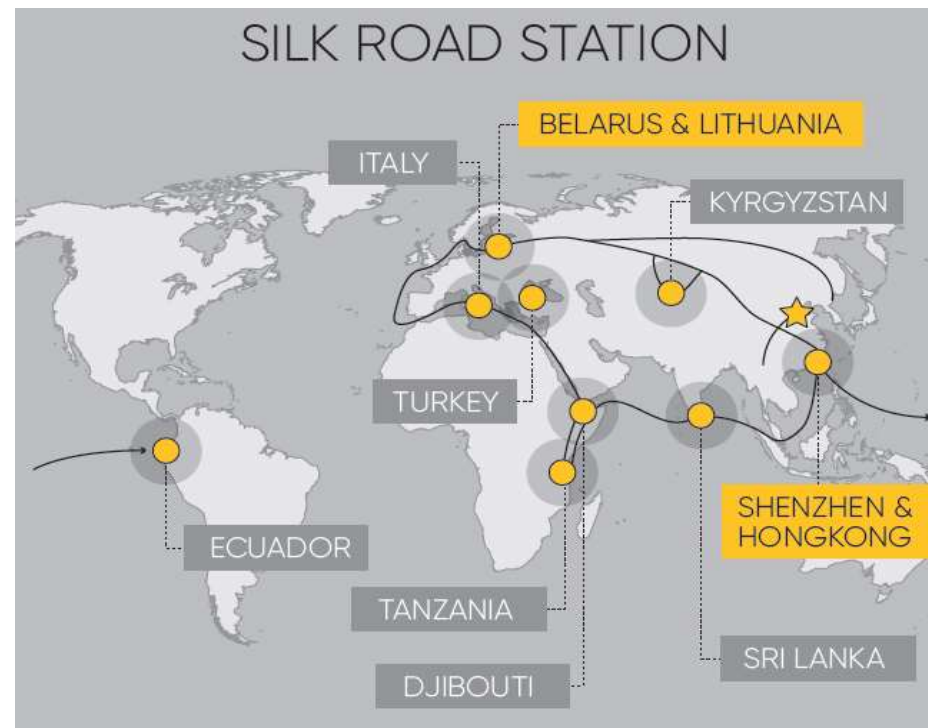


AKMENĖ DISTRICT MUNICIPALITY (2)



Distances

- Vilnius ~ 270 km
- Kaunas ~ 200 km
- Šiauliai ~ 60 km
- Klaipėda ~ 155 km
- Palanga ~ 140 km
- Riga ~ 120 km
- Liepāja ~ 160 km
- Ventspils ~ 170 km
- Kaliningrad ~ 310 km
- Minsk ~ 500 km



Klaipėda
Ryga
Liepāja
Ventspils



Vilnius
Kaunas
Šiauliai
Palanga
Riga



New Silk Road
Rail Baltica



Via Baltica
EU North Sea – Baltic Freight Corridor

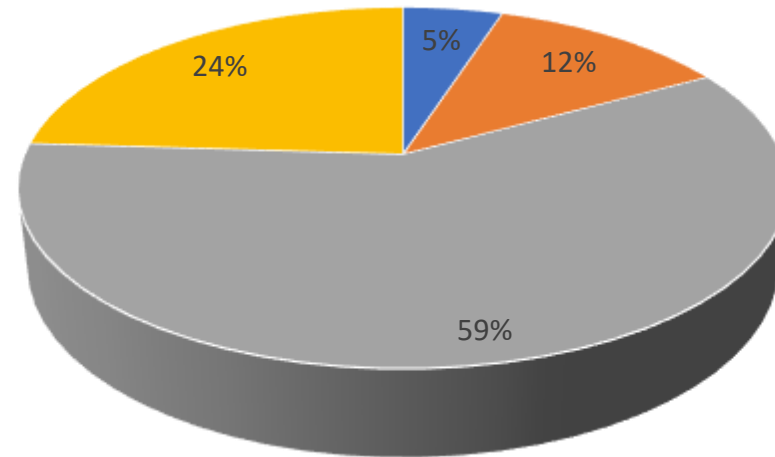
GENERAL INDICATORS (1)



Population
20.635

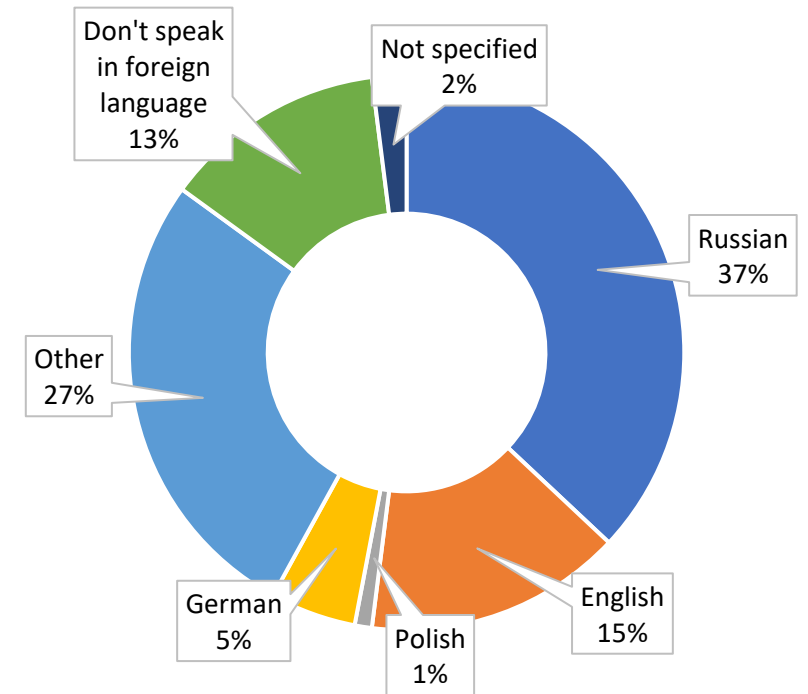


Population by age group



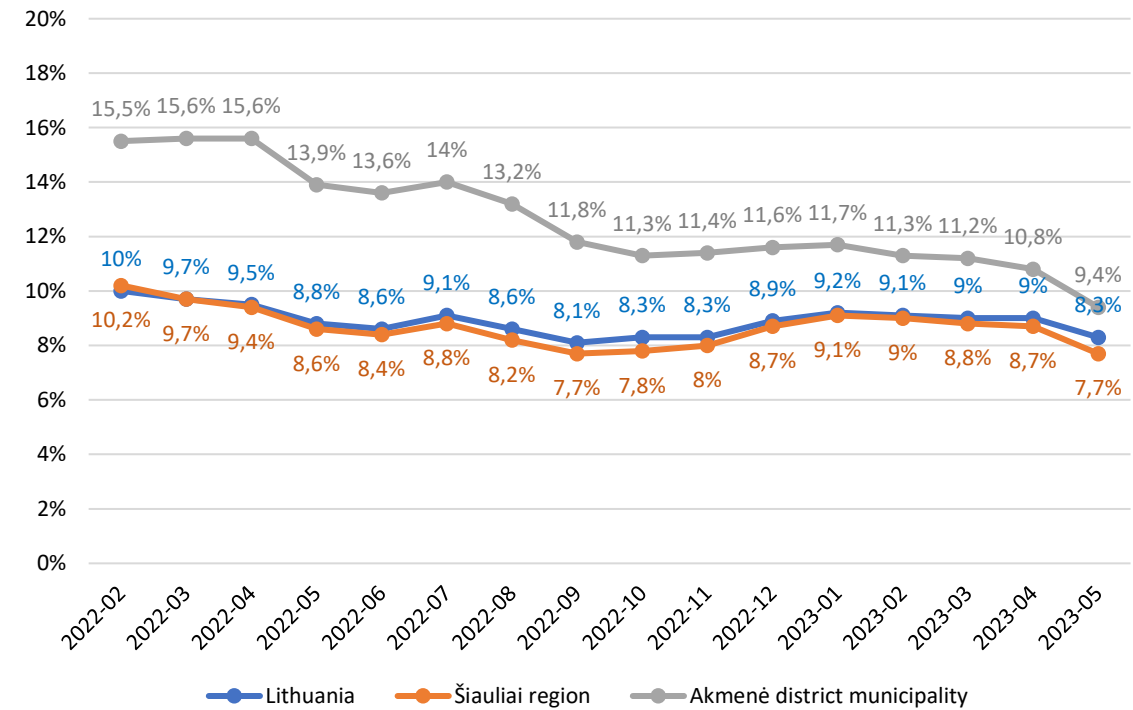
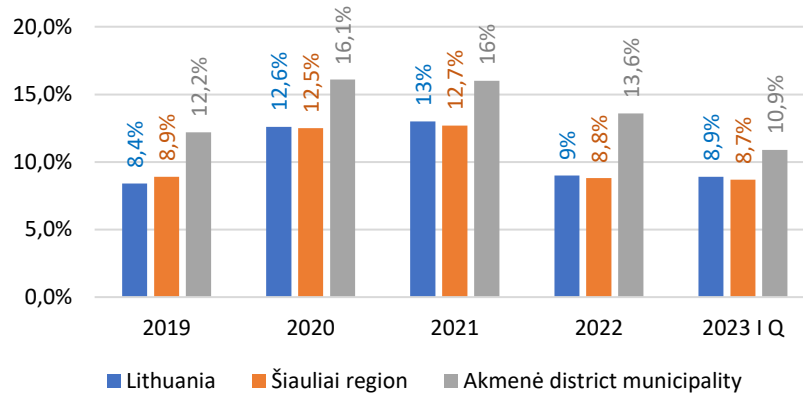
■ 0-6 Years ■ 7-18 Years ■ 19-64 Years ■ 65 and more Years

Foreign languages of the population



www.akmene.lt, www.stat.gov.lt

GENERAL INDICATORS (2)



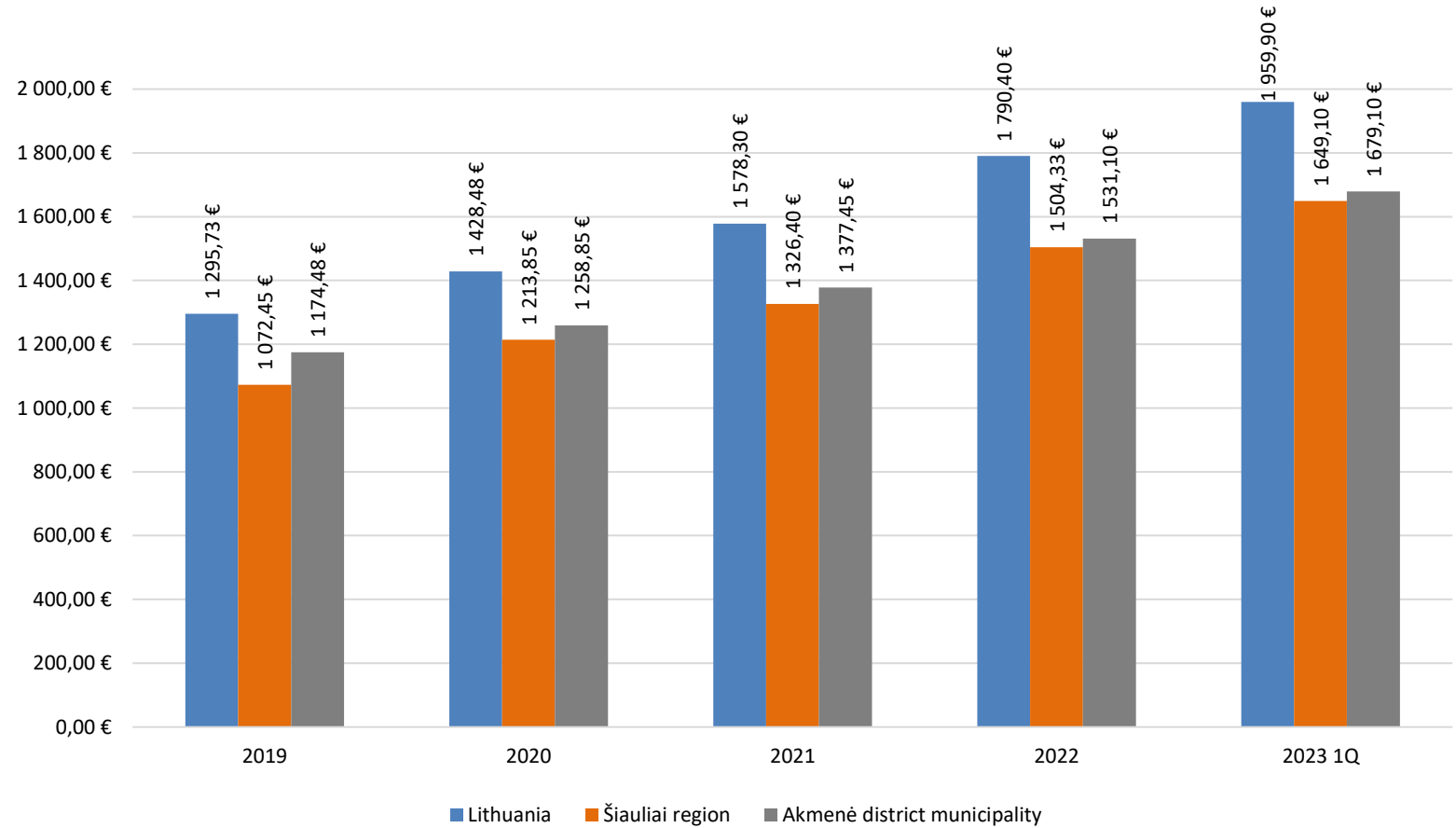
www.stat.gov.lt

Unemployment rate, %

GENERAL INDICATORS (3)



Average monthly gross earnings, EUR



www.stat.gov.lt

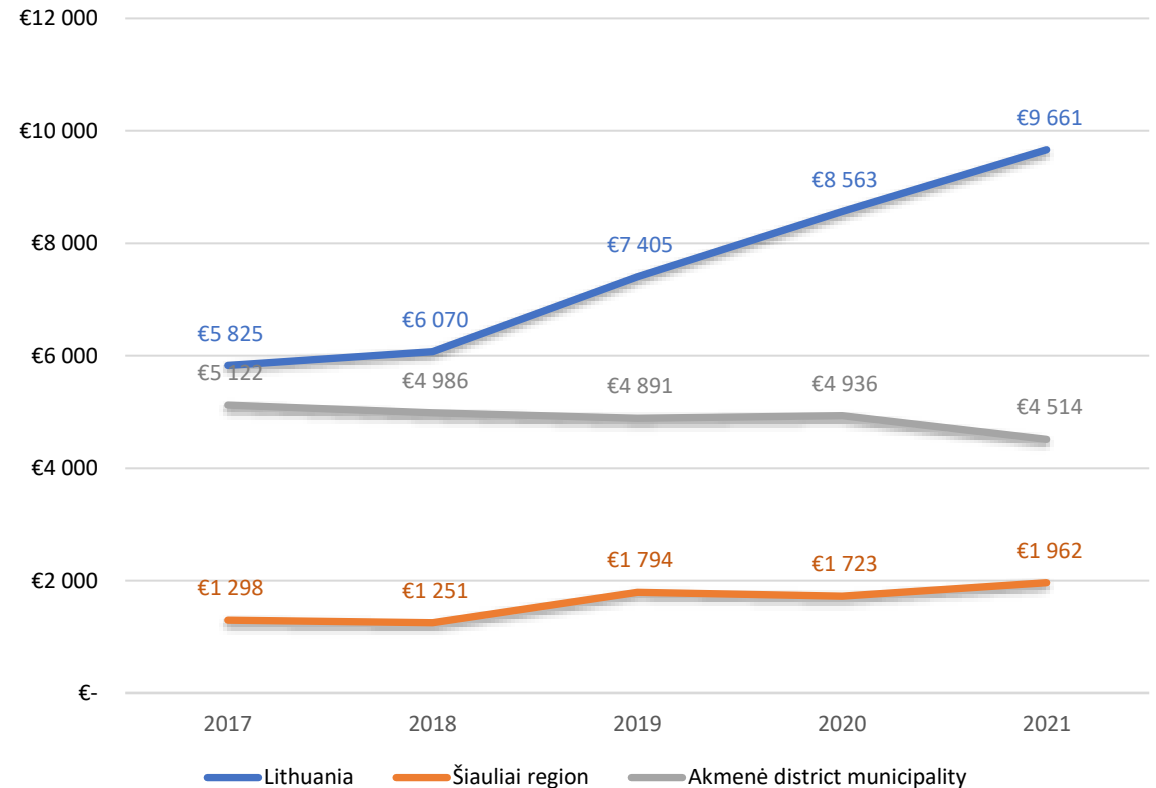
GENERAL INDICATORS (4)



Foreign direct investment, mln. EUR

	2017	2018	2019	2020	2021
Lithuania	16 360,56	16 959,32	20 691,38	23 938,13	27 109,91
Šiauliai region	344,69	328,27	469,13	447,92	512,44
Akmenė district municipality	100,42	95,35	91,81	91,50	86,93

Foreign direct investment per capita, EUR

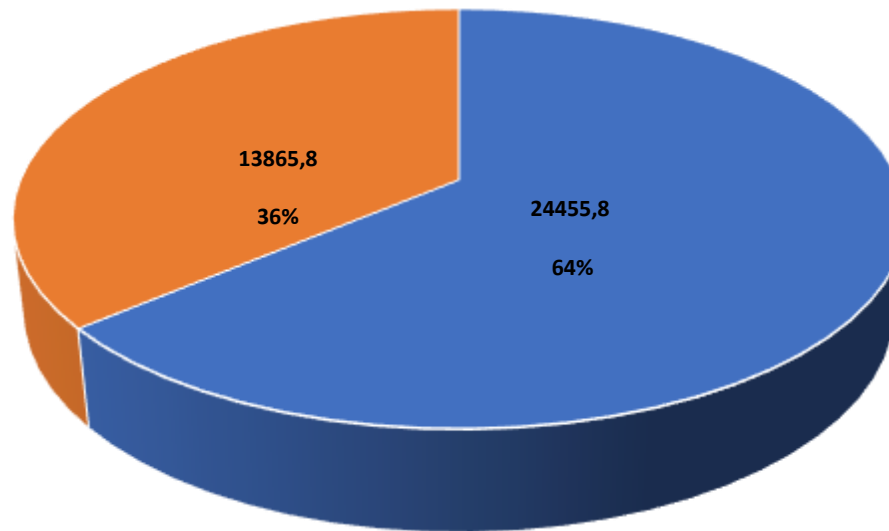


www.stat.gov.lt

GENERAL INDICATORS (5)



Implemented projects in 2018-2022



- Funds of EU and other funds and budget of Republic of Lithuania, thous. Eur
- Budget of Municipality, thous. Eur



FREE ECONOMIC ZONE OF AKMENE (FEZ)

(The Northern part)



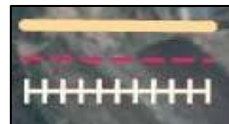
Type of taxes	Lithuania	FEZ
Corporate Income	15%	0% (first 10 years)
		7,5% (next 6 years)
Real Estate	0.3 – 1 %	0%
Dividends	15%	0%

Municipality invested to FEZ infrastructure >**3,7 mln. Eur** in 2009-2023

Planned investments to infrastructure >**1,5 mln. Eur** in 2024-2025



Boundary of Akmenė FEZ
Boundary of Naujoji Akmenė city
Line of railway





FREE ECONOMIC ZONE OF AKMENĖ (FEZ)

(The Southern part)

March, 2019



November, 2019



May, 2023



January, 2020



Value of attracted investments (since 2019) **>300 mln. Eur**

Investments to FEZ infrastructure **>10 mln. Eur**

New workplaces **>300**

Investments of Municipality and Lithuania budget funds in 2008-2023 **> 7,7 mln. Eur**

Planned investments to infrastructure in 2024-2025 **> 1,4 mln. Eur**

OTHER OPTIONS OF INVESTMENT IN AKMENE DISTRICT MUNICIPALITY (1)



INDUSTRIAL AREA OF VENTA TOWN



Industrial area of Venta town consists of 12 land plots of different size available from 0.25 ha to 4.32 ha.

Planned investments to infrastructure > **8 mln. Eur** in 2024-2026.

The industrial area is located near the railway station, the state roads Naujoji Akmenė – Venta and Kuršėnai – Mažeikiai.

The recommended purpose of land plots is storage and industry activities.

The largest companies for cooperation:

AB „Akmenė cementas“ is one of the largest cement manufacturers in the Baltic States and the only one in Lithuania.

UAB „Eternit Baltic“ is a manufacturer of fiber cement roofing and facade finishing materials.

UAB „Bigso“ produces exclusive products for shops, homes and offices worldwide.

UAB „Viking Industrier“ design, produce and sell high quality wooden garden products and accessories.

UAB „Vakarų medienos grupė“ is one of the largest companies in the Baltic States producing wood material and furniture.

OTHER OPTIONS OF INVESTMENT IN AKMENE DISTRICT MUNICIPALITY (2)



Venta Regional Park



Adapting careers to active leisure and recreation



State Reserve Kamanos

CONTACTS



Akmenės rajono savivaldybė
L. Petravičiaus 2 a., LT-85132 Naujoji Akmenė
Tel.: (8 425) 57 133
El. p.: info@akmene.lt
www.akmene.lt